

-  **BRIDGE  
(Northbound)**
-  **Bridge  
Access**
-  **Rio Del Norte  
Dr./Winn Rd.**
-  **Pan American  
Ave.**
-  **AMERICAS Ave.  
(BHW LP375 Gateway)**



# SEGMENT 1

## YSLETA - ZARAGOZA POE (NORTHBOUND) DISTANCE: 2000 FEET



PROJECT 1: SIGNING AND STRIPING US SIDE (SECTION 1)										
	ESTIMATED CONSTRUCTION ITEMS AND COST				QTY	UNIT PRICE	SUBTOTAL	ESTIMATED ENGINEERING FEE	ESTIMATED CONSTRUCTION INSPECTION COST	TOTAL
General	500	2001	BARRICADES, SIGN AND TRAFFIC CONTROL	MO	1	\$4,200.00	\$4,200.00	\$6,309.94	\$2,400.00	
	502	2001	MOBILIZATION	LS	1	\$3,927.76	\$3,927.76			
	666	6012	REFL PAV MRK TY I (W)4"(SLD)(100MIL)	LF	2400	\$0.40	\$960.00			
	666	6078	REFL PAV MRK TY I (W)(WORD)(100MIL)	EA	6	\$83.93	\$503.58			
	666	6170	REFL PAV MRK TY II (W) 4" (SLD)	LF	2400	\$0.09	\$216.00			
	666	6192	REFL PAV MRK TY II (W) (WORD)	EA	6	\$38.56	\$231.36			
	666	6126	REFL PAV MRK TY I (Y)4"(SLD)(100MIL)	LF	3400	\$0.40	\$1,360.00			
	666	6207	REFL PAV MRK TY II (Y) 4" (SLD)	LF	3400	\$0.09	\$306.00			
	666	6224	PAVEMENT SEALER 4"	LF	2000	\$0.20	\$400.00			
	677	6001	ELIM EXT PAV MRK & MRKS (4")	LF	4500	\$0.21	\$945.00			
			LANE DIVIDER	EA	500	\$79.95	\$39,975.00			
SUBTOTAL						*	\$53,024.70	\$6,309.94	\$2,400.00	\$61,734.63
Engineering and Contingencies 8 %										\$4,938.77
Inflation 10%										\$6,667.34
TOTAL										\$73,340.75



# SEGMENT 2

## YSLETA - ZARAGOZA POE ACCESS RD FROM RIO NORTE TO US GATE DISTANCE: 500 FEET



PROJECT 1: SIGNING AND STRIPING US SIDE (SECTION 2)									
	ESTIMATED CONSTRUCTION ITEMS AND COST				QTY	UNIT PRICE	SUBTOTAL	ESTIMATED ENGINEERING FEE	ESTIMATED CONSTRUCTION INSPECTION COST
General	500	2001	BARRICADES, SIGN AND TRAFFIC CONTROL	MO	1	\$4,200.00	\$4,200.00	\$1,316.51	\$1,200.00
	502	2001	MOBILIZATION	LS	1	\$358.40	\$358.40		
Signing	636	6001	ALUMINUM SIGNS (TY A)	SF	64	\$53.59	\$3,429.76		
	644	6049	IN SM RD SN SUP&AM TYS80(1)SB(U-EXAL)	EA	2	\$1,275.00	\$2,550.00		
Striping	666	6003	REFL PAV MRK TY I (W)4"(BRK)(100MIL)	LF	500	\$0.44	\$220.00		
	666	6167	REFL PAV MRK TY II (W) 4" (BRK)	LF	500	\$0.12	\$60.00		
	666	6078	REFL PAV MRK TY I (W)(WORD)(100MIL)	EA	2	\$83.93	\$167.86		
	666	6192	REFL PAV MRK TY II (W) (WORD)	EA	2	\$38.56	\$77.12		
SUBTOTAL							\$11,063.14	\$1,316.51	\$1,200.00
Engineering and Contingencies 8 %									
Inflation 10%									
TOTAL									

\*Estimate accounts for signs and pavement markings. Proposed work shall be coordinated with proposed roadway reconfiguration.



# SEGMENT 3

## RIO NORTE DR/WINN RD FROM YSLETA - ZARAGOZA ACCESS ROAD TO PAN AMERICAN DISTANCE: 8,000 FEET



\*Estimate accounts for signs and pavement markings. Proposed work shall be coordinated with proposed roadway reconfiguration.  
\*Rendering are for illustration purposes only. Pavement marking wording and location to be determine in plan set design phase.



# SEGMENT 3

## RIO NORTE DR/WINN RD FROM YSLETA - ZARAGOZA ACCESS ROAD TO PAN AMERICAN DISTANCE: 8,000 FEET



### PROJECT 1: SIGNING AND STRIPING US SIDE (SECTION 3)

ESTIMATED CONSTRUCTION ITEMS AND COST				QTY	UNIT PRICE	SUBTOTAL	ESTIMATED ENGINEERING FEE	ESTIMATED CONSTRUCTION INSPECTION COST	TOTAL
General	500	2001	BARRICADES, SIGN AND TRAFFIC CONTROL	MO	1	\$4,200.00	\$5,884.84	\$1,200.00	
	502	2001	MOBILIZATION	LS	1	\$3,663.15			
Signing	636	6001	ALUMINUM SIGNS (TY A)	SF	96	\$53.59			
	644	6049	IN SM RD SN SUP&AM TYS80(1)SB(U-EXAL)	EA	3	\$1,275.00			
Striping	416	2006	DRILL SHAFT (48 IN)	LF	30	\$28.53			
	540	2001	MTL W-BEAM GD FEN (TIM POST)	LF	180	\$18.01			
	540	2005	TERMINAL ANCHOR SECTION	EA	1	\$938.67			
	544	2001	GUARDRAIL END TREATMENT (INSTALL)	EA	1	\$2,488.89			
	647	2001	INSTALL LRSS (STRUCT STEEL)	LB	400	\$4.73			
	650	6038	INS OH SN SUP(35 FT CANT)	EA	1	\$22,345.00			
	666	6078	REFL PAV MRK TY I (W)(WORD)(100MIL)	EA	7	\$83.93			
	666	6192	REFL PAV MRK TY II (W) (WORD)	EA	7	\$38.56			
SUBTOTAL						\$49,452.48	\$5,884.84	\$1,200.00	\$56,537.32
Engineering and Contingencies 8 %									\$4,522.99
Inflation 10%									\$6,106.03
TOTAL									\$67,166.34

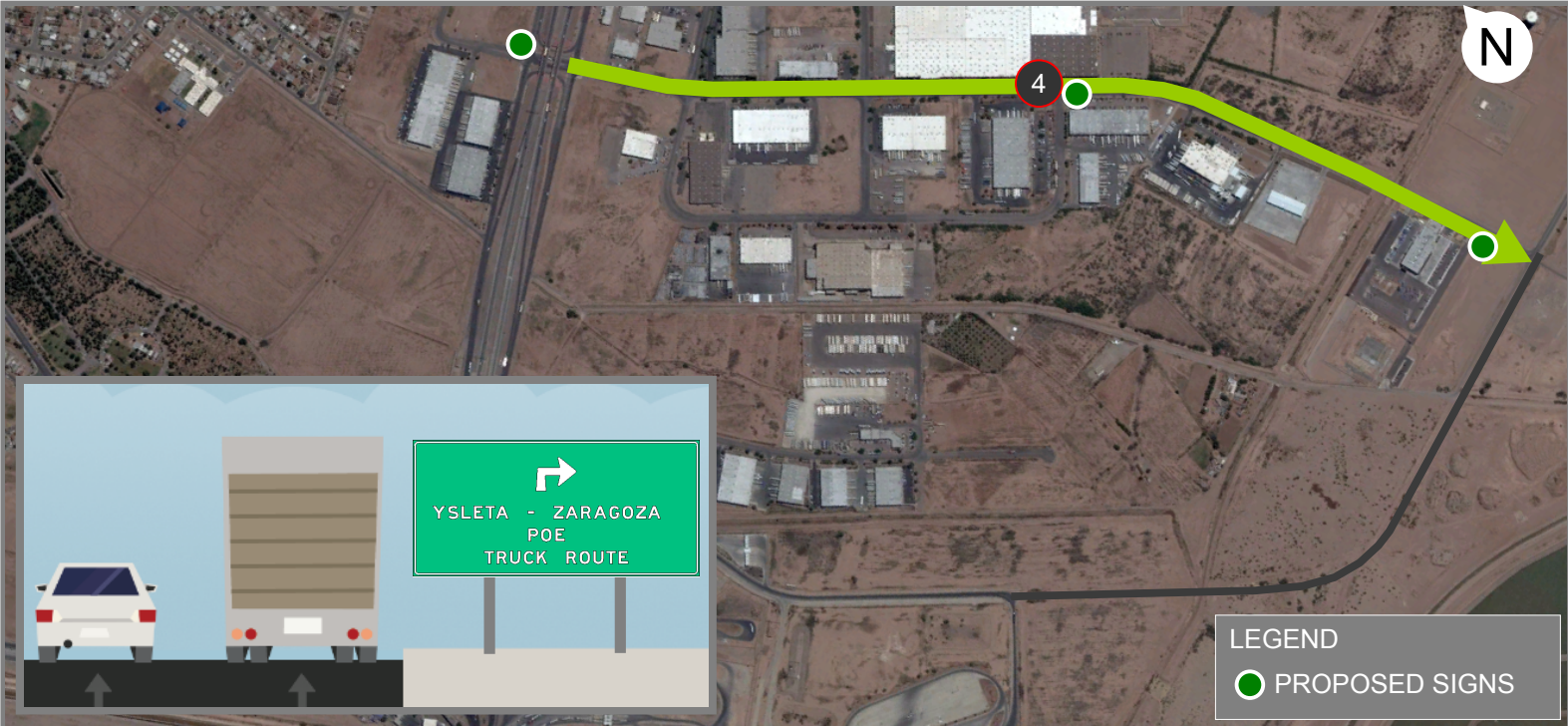
\*Estimate accounts for signs and pavement markings. Proposed work shall be coordinated with proposed roadway reconfiguration.

\*Rendering are for illustration purposes only. Pavement marking wording and location to be determine in plan set design phase.



# SEGMENT 4

## PAN AMERICAN AVE. FROM WINN RD TO AMERICANS AVE. DISTANCE: 6,000 FEET



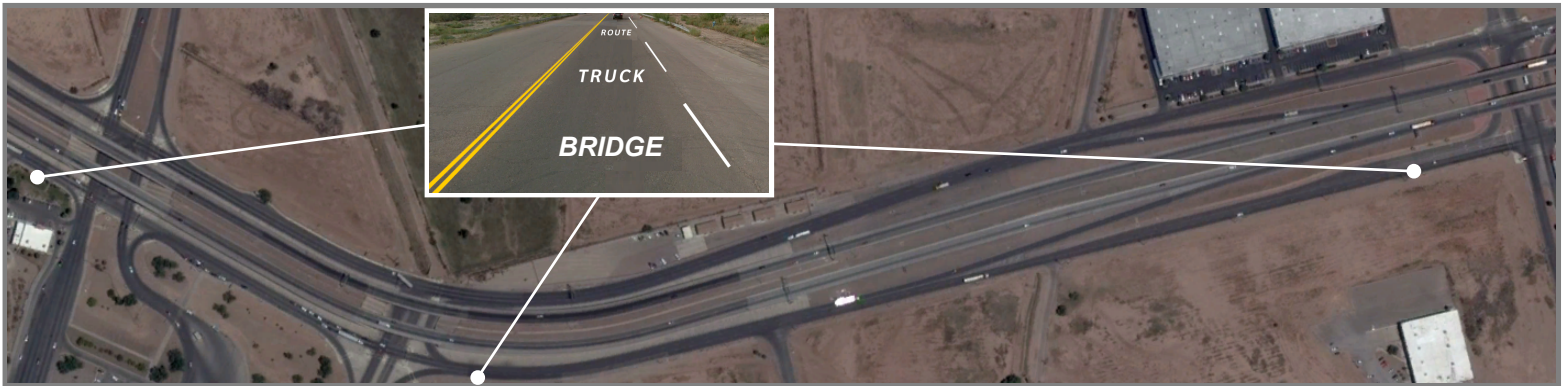
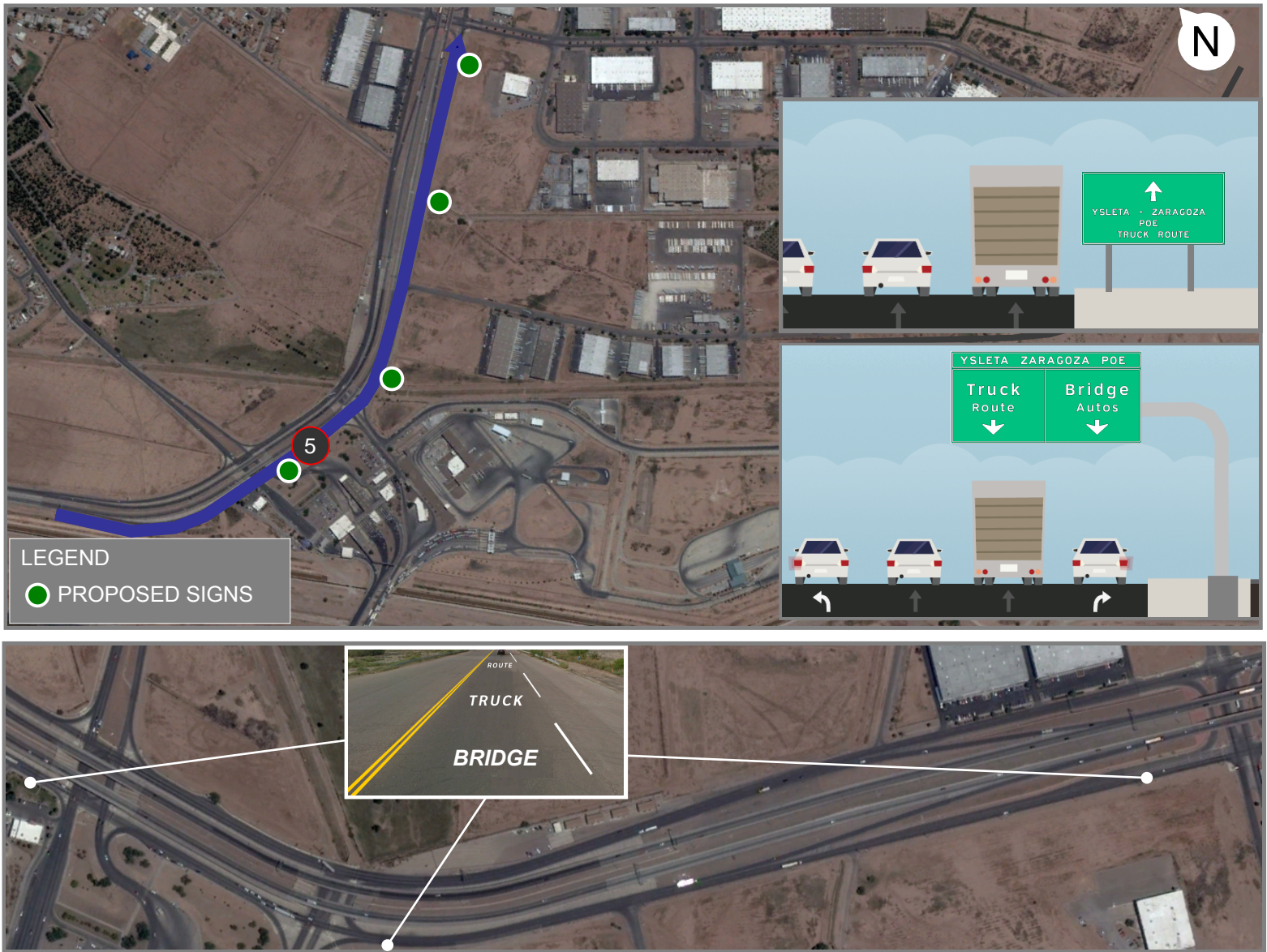
PROJECT 1: SIGNING AND STRIPING US SIDE (SECTION 4)									
	ESTIMATED CONSTRUCTION ITEMS AND COST				QTY	UNIT PRICE	SUBTOTAL	ESTIMATED ENGINEERING FEE	ESTIMATED CONSTRUCTION INSPECTION COST
General	500	2001	BARRICADES, SIGN AND TRAFFIC CONTROL	MO	1	\$4,200.00	\$4,200.00	\$2,139.79	\$1,200.00
	502	2001	MOBILIZATION	LS	1	\$1,331.96	\$1,331.96		
Signing	636	6001	ALUMINUM SIGNS (TY A)	SF	128	\$53.59	\$6,859.52		
	644	6049	IN SM RD SN SUP&AM TYS80(1)SB(U-EXAL)	EA	4	\$1,275.00	\$5,100.00		
Striping	666	6078	REFL PAV MRK TY I (W)(WORD)(100MIL)	EA	4	\$83.93	\$335.72		
	666	6192	REFL PAV MRK TY II (W) (WORD)	EA	4	\$38.56	\$154.24		
SUBTOTAL							\$17,981.44	\$2,139.79	\$1,200.00
Engineering and Contingencies 8 %									\$1,705.70
Inflation 10%									\$2,302.69
TOTAL									\$25,329.62

\*Rendering are for illustration purposes only. Pavement marking wording and location to be determine in plan set design phase.



# SEGMENT 5

## AMERICAS AVE (BHW LP375 GATEWAY) NORTHBOUND FROM EXIT TO PAN AMERICAN DR DISTANCE: 5,600 FEET



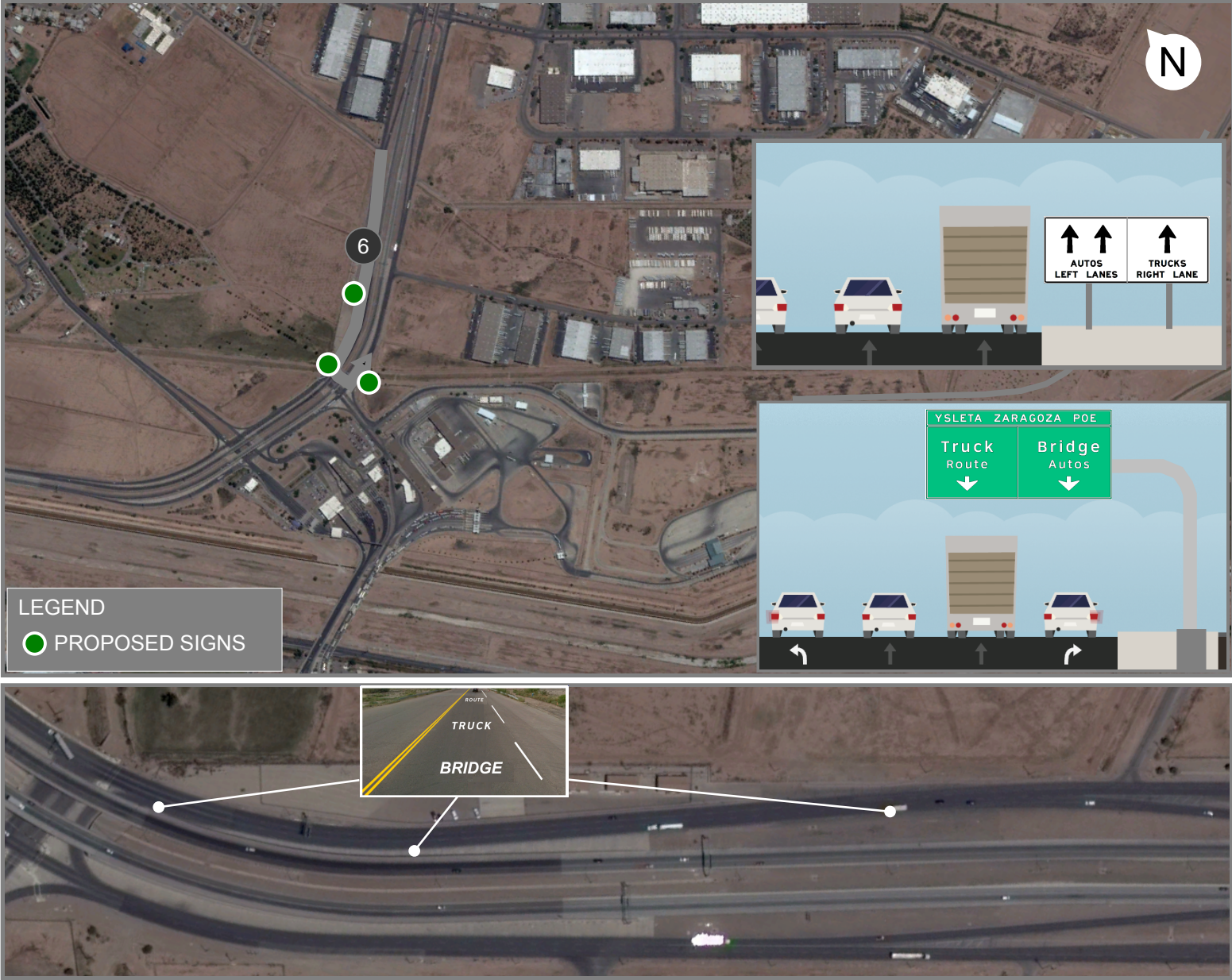
PROJECT 1: SIGNING AND STRIPING US SIDE (SECTION 5)										
	ESTIMATED CONSTRUCTION ITEMS AND COST				QTY	UNIT PRICE	SUBTOTAL	ESTIMATED ENGINEERING FEE	ESTIMATED CONSTRUCTION INSPECTION COST	TOTAL
General	500	2001	BARRICADES, SIGN AND TRAFFIC CONTROL	MO	2	\$4,200.00	\$8,400.00	\$13,475.14	\$2,300.00	
	502	2001	MOBILIZATION	LS	1	\$8,387.88	\$8,387.88			
Signing	636	6001	ALUMINUM SIGNS (TY A)	SF	128	\$53.59	\$6,859.52			
	636	6003	ALUMINUM SIGNS (TY O)	SF	500	\$40.72	\$20,360.00			
	644	6049	IN SM RD SN SUP&AM TYS80(1)SB(U-EXAL)	EA	4	\$1,275.00	\$5,100.00			
	416	2006	DRILL SHAFT (48 IN)	LF	80	\$28.53	\$2,282.40			
	540	2001	MTL W-BEAM GD FEN (TIM POST)	LF	360	\$18.01	\$6,483.60			
	540	2005	TERMINAL ANCHOR SECTION	EA	2	\$938.67	\$1,877.34			
	544	2001	GUARDRAIL END TREATMENT (INSTALL)	EA	2	\$2,488.89	\$4,977.78			
	647	2001	INSTALL LRSS (STRUCT STEEL)	LB	600	\$4.73	\$2,838.00			
Striping	650	6038	INS OH SN SUP(35 FT CANT)	EA	2	\$22,345.00	\$44,690.00			
	666	6078	REFL PAV MRK TY I (W)(WORD)(100MIL)	EA	8	\$83.93	\$671.44			
	666	6192	REFL PAV MRK TY II (W) (WORD)	EA	8	\$38.56	\$308.48			
SUBTOTAL						*	\$113,236.44	\$13,475.14	\$2,300.00	\$129,011.58
Engineering and Contingencies 8 %										\$10,320.93
Inflation 10%										\$13,933.25
TOTAL										\$153,265.76

\*Estimate accounts for signs and pavement markings. Proposed work shall be coordinated with proposed roadway reconfiguration.  
 \*Rendering are for illustration purposes only. Pavement marking wording and location to be determine in plan set design phase.



# SEGMENT 6

## AMERICAS AVE (BHW LP375 GATEWAY) NORTHBOUND FROM EXIT TO PAN AMERICAN DR DISTANCE: 2,000 FEET

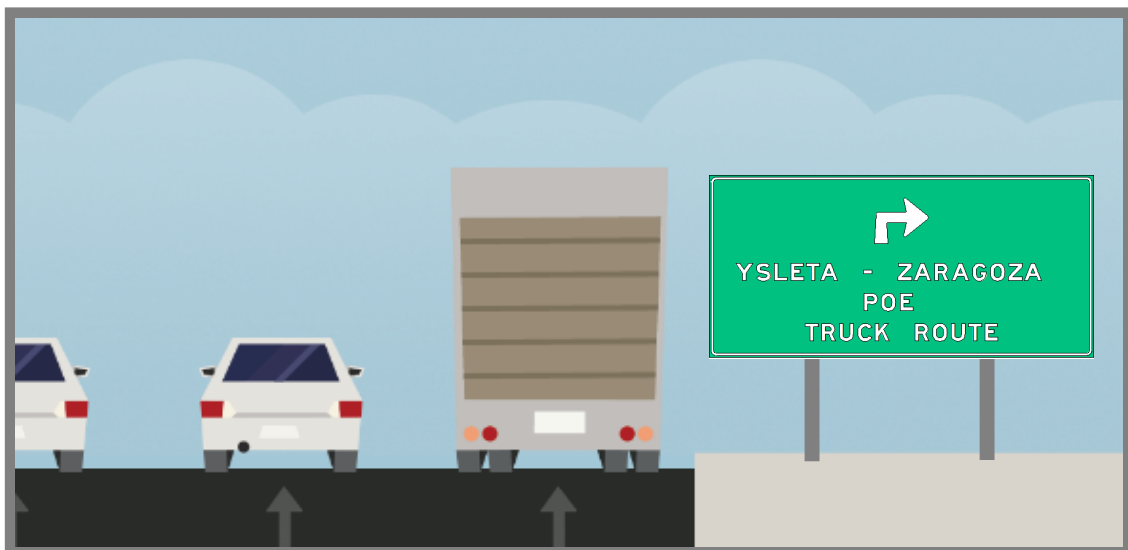
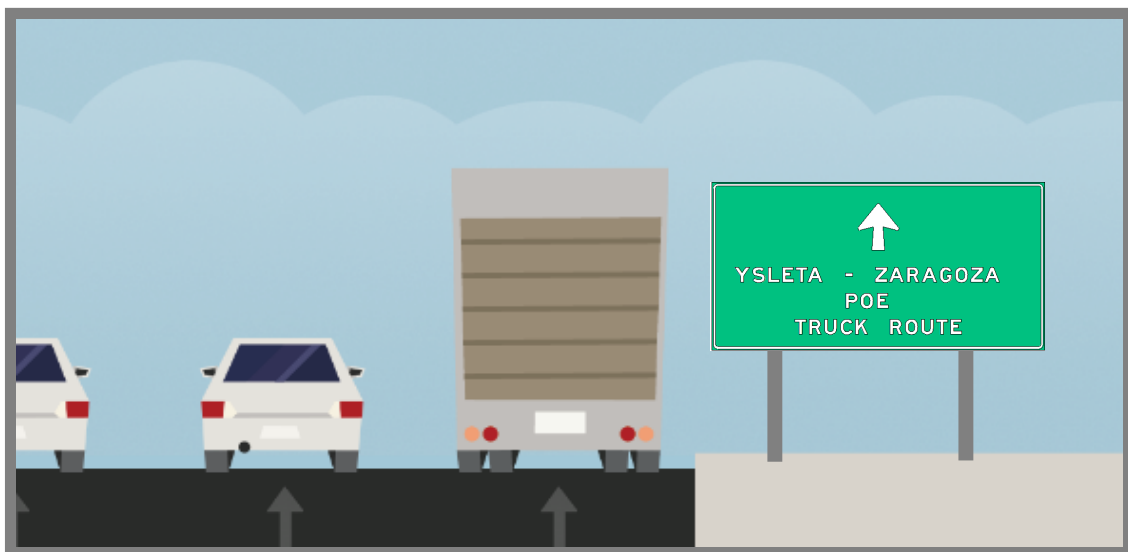


PROJECT 1: SIGNING AND STRIPING US SIDE (SECTION 6)									
	ESTIMATED CONSTRUCTION ITEMS AND COST				QTY	UNIT PRICE	SUBTOTAL	ESTIMATED ENGINEERING FEE	ESTIMATED CONSTRUCTION INSPECTION COST
General	500	2001	BARRICADES, SIGN AND TRAFFIC CONTROL	MO	2	\$4,200.00	\$8,400.00	\$7,364.45	\$2,300.00
	502	2001	MOBILIZATION	LS	1	\$4,584.16	\$4,584.16		
Signing	636	6001	ALUMINUM SIGNS (TY A)	SF	64	\$53.59	\$3,429.76		
	636	6003	ALUMINUM SIGNS (TY O)	SF	250	\$40.72	\$10,180.00		
	644	6049	IN SM RD SN SUP&AM TYS80(1)SB(U-EXAL)	EA	2	\$1,275.00	\$2,550.00		
	416	2006	DRILL SHAFT (48 IN)	LF	30	\$28.53	\$855.90		
	540	2001	MTL W-BEAM GD FEN (TIM POST)	LF	180	\$18.01	\$3,241.80		
	540	2005	TERMINAL ANCHOR SECTION	EA	1	\$938.67	\$938.67		
	544	2001	GUARDRAIL END TREATMENT (INSTALL)	EA	1	\$2,488.89	\$2,488.89		
	647	2001	INSTALL LRSS (STRUCT STEEL)	LB	400	\$4.73	\$1,892.00		
Striping	650	6038	INS OH SN SUP(35 FT CANT)	EA	1	\$22,345.00	\$22,345.00		
	666	6078	REFL PAV MRK TY I (W)(WORD)(100MIL)	EA	8	\$83.93	\$671.44		
	666	6192	REFL PAV MRK TY II (W) (WORD)	EA	8	\$38.56	\$308.48		
SUBTOTAL							\$61,886.10	\$7,364.45	\$2,300.00
Engineering and Contingencies 8 %									\$5,724.04
Inflation 10%									\$7,727.46
TOTAL									\$85,002.04

\*Estimate accounts for signs and pavement markings. Proposed work shall be coordinated with proposed roadway reconfiguration.  
\*Rendering are for illustration purposes only. Pavement marking wording and location to be determine in plan set design phase.

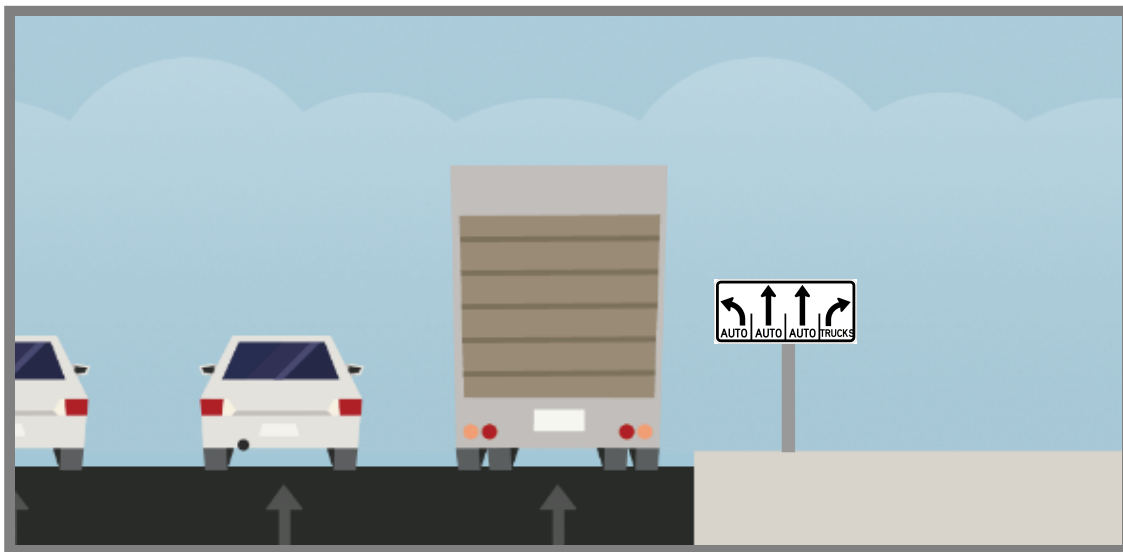
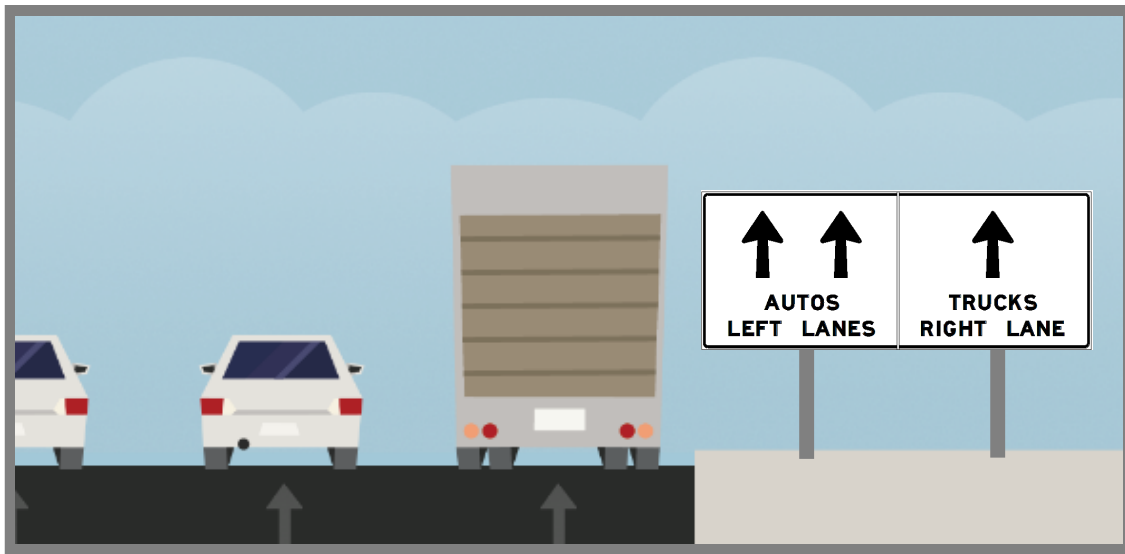


# DIRECTION SIGNS/ TRUCK ROUTE (Typical)





# LANE ASSIGNMENT SIGNS (TYPICAL)





# INTELLIGENT TRANSPORTATION SYSTEM



DMS, CCTV CAMERA, BLUETOOTH, AND AVI READERS OVER A CELL PHONE MODEM CONNECTION							
				QTY	UNIT	UNIT PRICE	SUBTOTAL
DMS, CCTV CAMERA, Bluetooth	416	2005	DRILL SHAFT (42 IN)	25	LF	\$151.46	\$3,786.50
	500	2001	BARRICADES, SIGN AND TRAFFIC CONTROL	1	MO	\$4,200.00	\$4,200.00
	502	2001	MOBILIZATION	1	LS	\$11,225.85	\$11,225.85
	540	2001	MTL W-BEAM GD FEN (TIM POST)	200	LF	\$18.01	\$3,602.00
	540	2005	TERMINAL ANCHOR SECTION	1	EA	\$938.67	\$938.67
	544	2001	GUARDRAIL END TREATMENT (INSTALL)	1	EA	\$2,488.89	\$2,488.89
	618	2018	CONDT (PVC) (SCHD 40) (2")	200	LF	\$7.01	\$1,402.00
	618	2019	CONDT (PVC) (SCHD 40) (2") (BORE)	300	LF	\$18.80	\$5,640.00
	620	2010	ELEC CONDR (NO. 6) INSULATED (POWER)	1000	LF	\$1.49	\$1,490.00
	620	2010	ELEC CONDR (NO. 6) INSULATED (GROUND)	500	LF	\$1.49	\$745.00
	624	2008	GROUND BOX TY A (122311) W/APRON	3	EA	\$735.03	\$2,205.09
	628	2075	ELC SRV TY D 120/240 060 (NS) SS (E) SP (U)	1	EA	\$4,625.00	\$4,625.00
	650	2022	INS OH SN SUP (25 FT CANT)	1	EA	\$18,000.00	\$18,000.00
	6920	2001	CCTV FIELD EQUIPMENT	1	EA	\$15,000.00	\$15,000.00
	2339	2001	FIELD ETHERNET SWITCH	1	EA	\$3,000.00	\$3,000.00
	2343	2001	BLUETOOTH READER	1	EA	\$4,200.00	\$4,200.00
			LED DMS FIELD EQUIPMENT	1	EA	\$60,000.00	\$60,000.00
			AVI READERS (PASSENGER VEHICLES AND TRUCKS)	3	EA	\$3,000.00	\$9,000.00
		CELLULAR MODEM (4G) 5 YEARS SERVICE	1	EA	\$6,800.00	\$6,800.00	
UNIT PRICE COST INCLUDES A 5 YEAR OF MONTHLY SERVICE FEES							
TOTAL							\$158,349.00



# OVERHEAD SIGN LIGHTING

